

King & Kayla



ACTIVITY KIT



PEACHTREE

1700 Chattahoochee Avenue • Atlanta, GA, 30318 • 800-241-0113
www.peachtree-online.com

King & Kayla

A lovable dog helps his human girl solve mysteries. With simple, straightforward language and great verbal and visual humor, the easy-to-read *King & Kayla* series from Geisel Honor Award-winning team Dori Hillestad Butler and Nancy Meyers is perfect for newly independent readers.



ABOUT DORI HILLESTAD BUTLER

Dori Hillestad Butler is the author of over fifty works of fiction and nonfiction for young readers. She has also published stories for children in magazines such as *Highlights for Children*, *Cricket*, *Spider*, *Children's Digest*, and *Child Life*. She lives in Washington. You can visit her website at www.kidswriter.com.

ABOUT NANCY MEYERS

Nancy Meyers is a graphic designer and illustrator and the proud owner of Sullivan, golden-doodle extraordinaire! She lives in Minnesota. To see more of her work, visit www.nancydrewit.com.



Books in the *King & Kayla* Series:

King & Kayla and the Case of the Missing Dog Treats
King & Kayla and the Case of the Secret Code
King & Kayla and the Case of the Mysterious Mouse
King & Kayla and the Case of the Lost Tooth
King & Kayla and the Case of Found Fred
King & Kayla and the Case of the Unhappy Neighbor
King & Kayla and the Case of the Gold Ring

Check out the *King & Kayla* Series Guide for more common core-aligned activities and discussion topics!

For more information, visit the series page at <https://peachtree-online.com/books/series/king-kayla/>



King & Kayla

Kayla's Peanut Butter Dog Treats



Ingredients

- 2 cups of flour
- 1 cup of rolled oats
- 1/3 cup of smooth peanut butter
- 1 tablespoon of honey
- 1/2 tablespoon of fish oil
- 1 1/2 cups of water

Preheat the oven to 350 degrees Fahrenheit.

Mix the flour and oats together in a large mixing bowl. Pour in one cup of water and blend until smooth. Add in the peanut butter, honey, and fish oil and mix until all the ingredients are well blended.

Slowly add the water until the mixture has a thick and doughy consistency.

Lightly flour a cooking surface. Roll the dough onto the cooking surface to create a 1/4 inch thick sheet.

Use a cookie cutter to create shapes. Place the cookies onto a baking sheet and bake for 40 minutes.

Allow to cool completely before feeding.

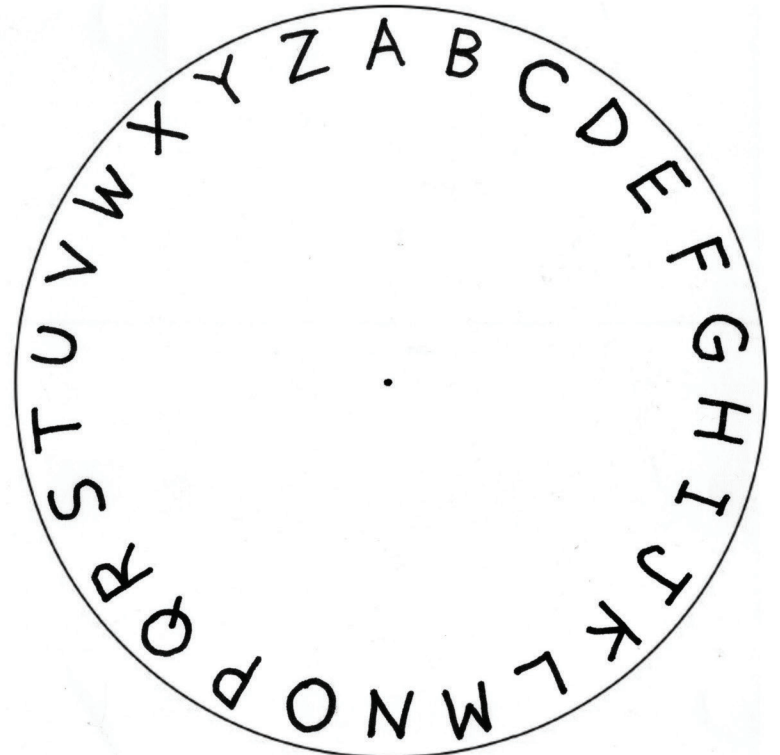
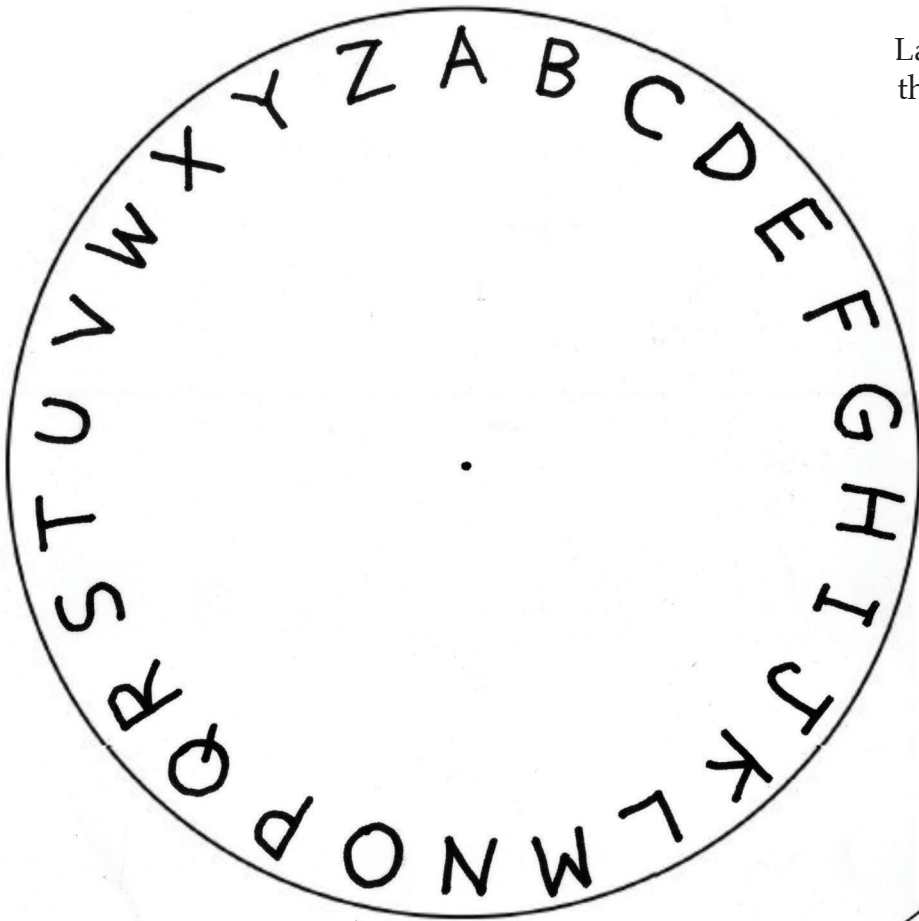
Pro Tip: If the dough is too sticky to roll, slowly pad more flour onto the dough ball.

Source: www.moneycrashers.com/homemade-dog-food-treat-recipes



King & Kayla

Make your own decoder!
Layer the circles and push a brad through
the middle. You're ready to start cracking
codes with King and Kayla!

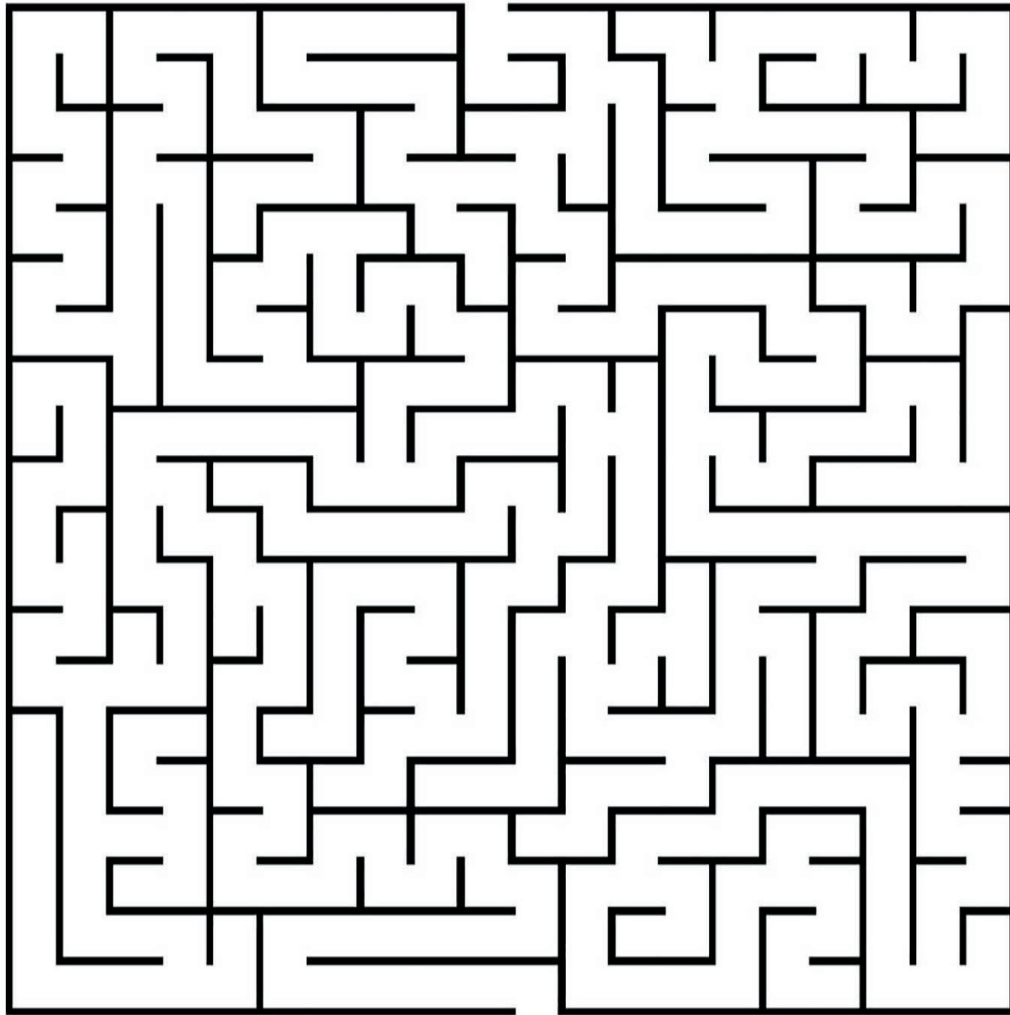


PEACHTREE

www.peachtree-online.com

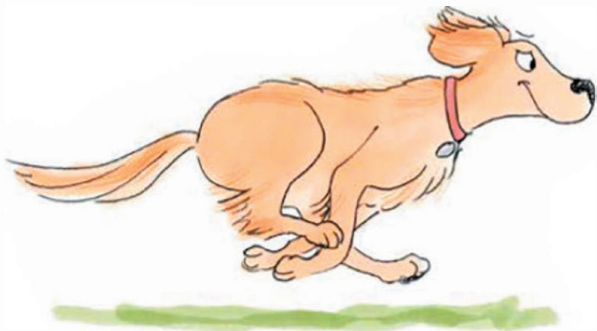
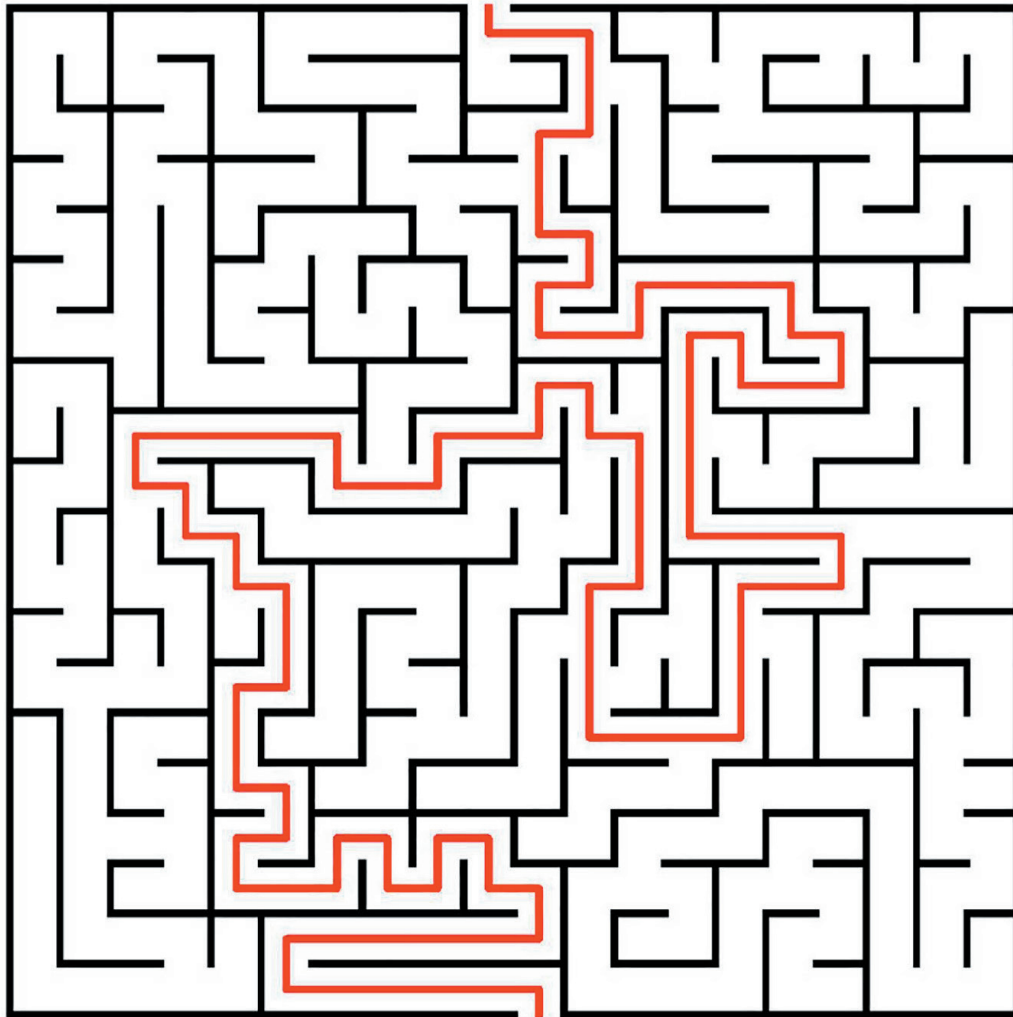
King & Kayla

Help King, Thor, and their new friend find the ball at the end of the maze!



King & Kayla

Help King, Thor, and their new friend find the ball at the end of the maze!



PEACHTREE
www.peachtree-online.com

Copyright ©2019 by Nancy Meyers from
King & Kayla and the Case of the Mysterious Mouse

King & Kayla

DIY Pouch for Your Own Lost Tooth!

What You'll Need:

A piece of white felt

A piece of felt in your favorite color

Scissors (and a grown-up to supervise)

Fabric glue

Iron (optional)



Instructions:

1. Cut a tooth shape out of the white felt.
2. Cut a long rectangle shape out of the colored felt.
3. Fold the bottom of the rectangle a little bit more than half of the way up to create the front piece and crease it.
4. Let it go, and place a thin line of fabric glue on each side to glue the sides of the pocket you just creased.
5. You can use a book or something heavy to help hold it down while it dries!
6. Once it's dried, use the fabric glue to glue the tooth-shaped felt onto the front of the pocket, again using a book to hold it down while it dries.
7. If you'd like, ask a grown-up to iron down the top flap.



King & Kayla

Draw a map to help King and Kayla find Fred's family!

In *King & Kayla and the Case of Found Fred*, King and Kayla look for Fred's family all over the lake—first going to Grandma's neighbors before going on a boat ride to the campground.



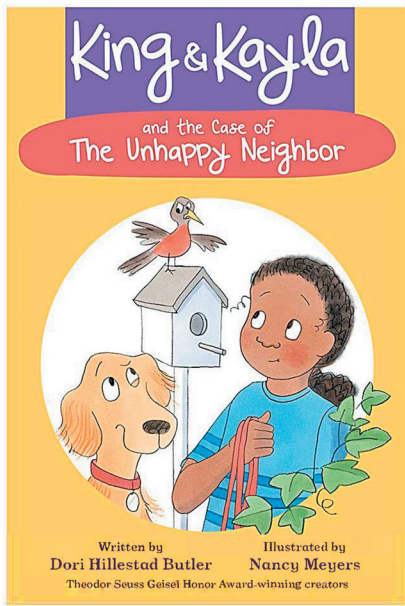
Imagine you are helping King and Kayla look for Fred's family. First, you'll need a map! Using the description in the book (and your imagination!), draw a map of the lake in the space below. Be sure to include Grandma's house, a few of her neighbors' houses, and the campground. You can decorate your map with trees, boats, and more.

But don't forget to include a key (or legend) that tells your map readers about the items you've included. If you'd like, use the back of this page to draw a map of your own neighborhood.

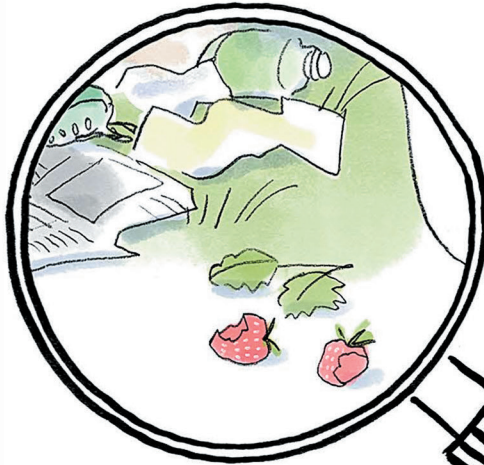


King & Kayla

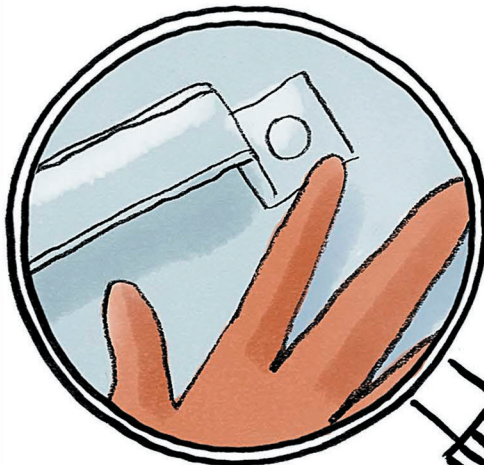
Here are some clues from *King & Kayla and the Case of the Unhappy Neighbor*. Can you find what page matches each clue?



This clue is on page:



This clue is on page:



This clue is on page:



PEACHTREE

www.peachtree-online.com

King & Kayla

In *King & Kayla and the Case of the Gold Ring*, Asia has lost her gold ring! But where can it be?

Help King, Kayla, Asia, and Mason retrace the events of the day by correctly ordering their activities below (from 1-5). Read *King & Kayla and the Case of the Gold Ring* to find the answers.



_____ Kayla, Mason, and Asia washed their hands.



_____ Kayla, King, Mason, and Asia played in the snow outside.



_____ Kayla, Mason, and Asia had hot chocolate in the kitchen.



_____ They all watched TV on the couch.



_____ Mom put the wet clothes in the dryer.

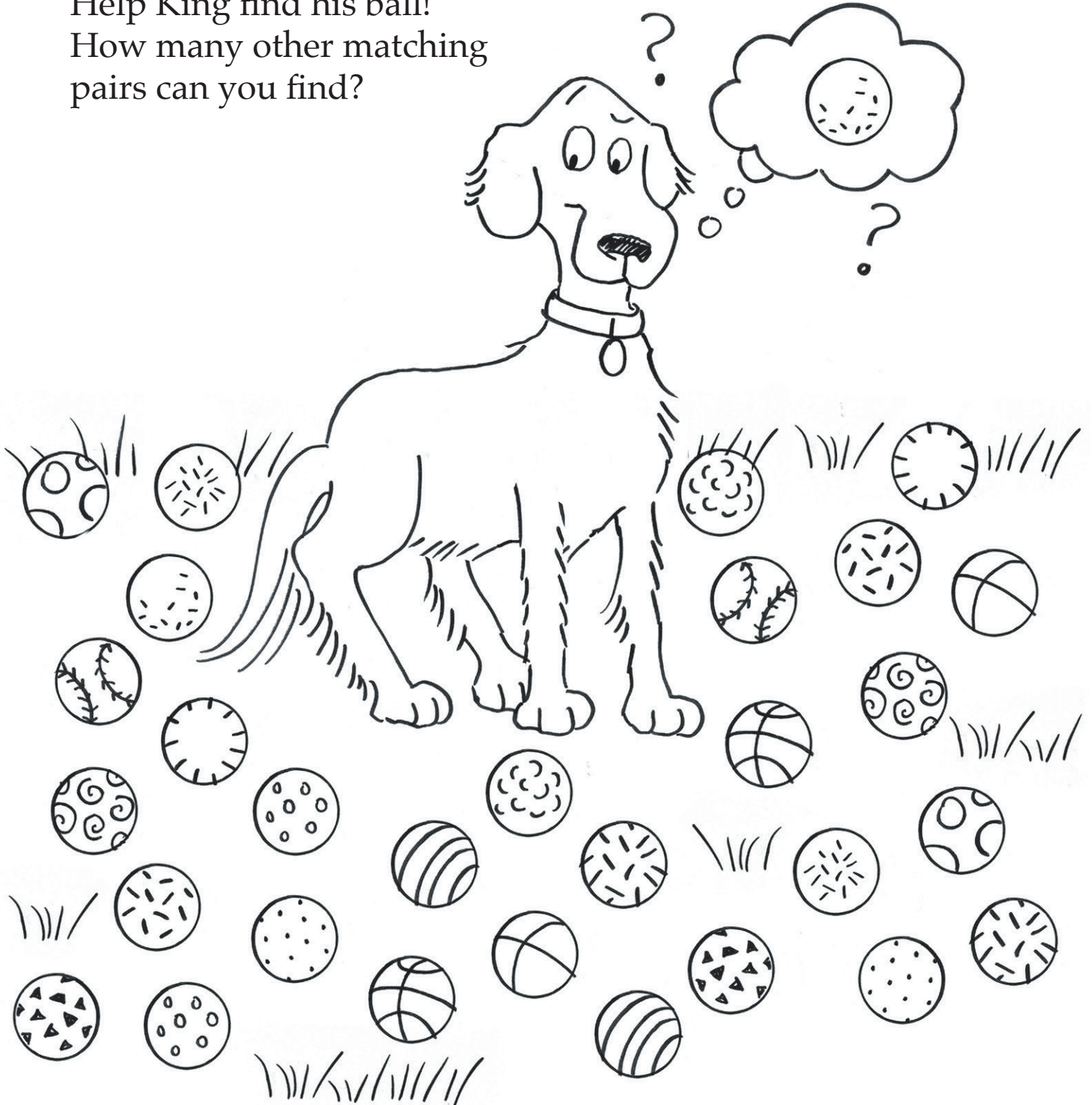


PEACHTREE

www.peachtree-online.com

King & Kayla

Help King find his ball!
How many other matching
pairs can you find?



PEACHTREE

www.peachtree-online.com

Copyright ©2019 by Nancy Meyers

King & Kayla

Draw some of King's favorite things!



PEACHTREE

www.peachtree-online.com

Copyright ©2019 by Nancy Meyers

King & Kayla

Write or draw what King is thinking!



PEACHTREE

www.peachtree-online.com

Copyright ©2019 by Nancy Meyers

Here is what I know about the problem.



Here is what I don't know about the problem.



Here is my plan to solve the problem.

